

PIN ASSIGNMENT FOR CTP		PIN ASSIGNMENT FOR LCM	
NO.	SYMBOL	NO.	SYMBOL
1	GND	1	VLED-
2	NC	2	VLED-
3	D+	3	VLED+
4	D-	4	VLED+
5	VBUS	5	NC
		6	GND
		7	ELV3P
		8	ELV3N
		9	GND
		10	ELV2P
		11	ELV2N
		12	GND
		13	ELVCLKP
		14	ELVCLKN
		15	GND
		16	ELV1P
		17	ELV1N
		18	GND
		19	ELVOP
		20	ELVON
		21	GND
		22	OLV3P
		23	OLV3N
		24	GND
		25	OLV2P
		26	OLV2N
		27	GND
		28	OLVCLKP
		29	OLVCLKN
		30	GND
		31	OLV1P
		32	OLV1N
		33	GND
		34	OLVOP
		35	OLVON
		36	GND
		37	I2C_SDA
		38	I2C_SCL
		39	VDD_OTP
		40	VDDIN
		41	VDDIN
		42	VDDIN
		43	VDDIN
		44	VDDIN
		45	VDDIN

NOTES FOR TFT:

1. DISPLAY TYPE: IPS TFT, TRANSMISSIVE, NORMALLY BLACK.
2. OPERATING VOLTAGE: VDDIN=3.3V.
3. VIEWING DIRECTION: FULL VIEWING ANGLE.
4. IC DRIVER: HX8290-B.
5. BACKLIGHT: 45-CHIP WHITE LED, If=300mA, Vf=8.4~10.5V.
6. TOP POLARIZER SURFACE TREATMENT: ANTI-GLARE.

NOTES FOR CTP:

1. 10.1 INCH PROJECTIVE CAPACITIVE TOUCH PANEL.
2. OPERATING VOLTAGE: VBUS=5.0V.
3. COVER GLASS + SENSOR GLASS +FPCA.
4. IC DRIVER: ILI2511(TX:29*RX:19).
5. INTERFACE: USB.
6. MULTI FINGER: UP TO 5.
7. HARDNESS OF COVER SURFACE: 6H.

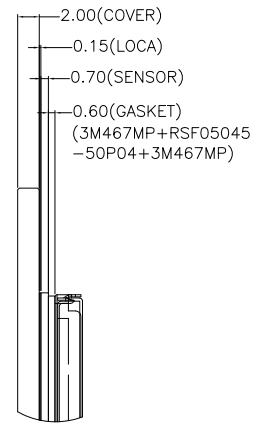
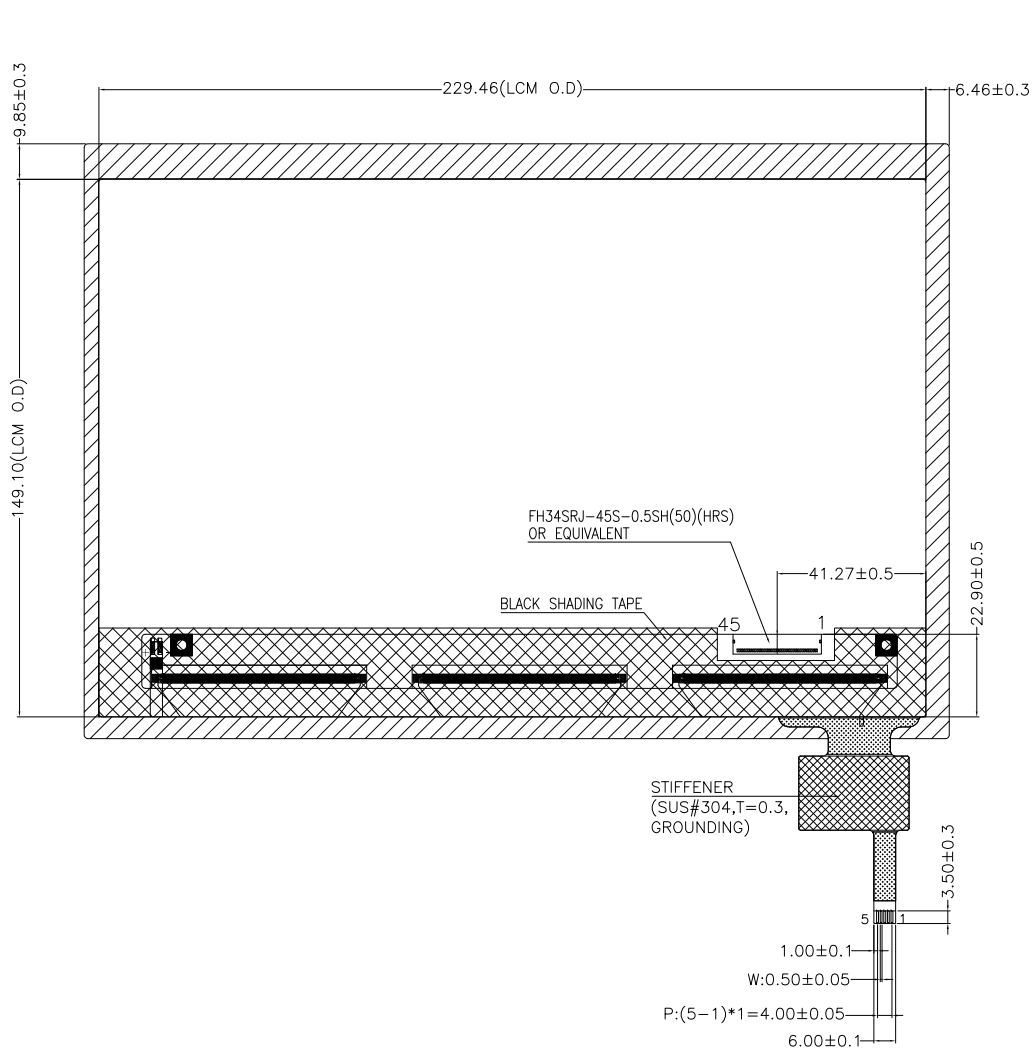
NOTES FOR OTHERS:

1. OPERATING TEMP.: -20°C ~ 70°C.
2. STORAGE TEMP.: -30°C ~ 80°C.
3. SURFACE LUMINANCE: 250CD/M²(TYP.) WITH CTP.
4. GENERAL TOLERANCE: ±0.3MM.
5. ROHS COMPLIANT.

PIXEL DETAILS

MULTI-INNO TECHNOLOGY CO.,LTD.			
DRAWN BY:	CAROL 2021.01.14		MODULE P/N:
CHECKED BY:		SCALE : 1/1	MI1010ART-1CP
APPROVED BY:		UNIT: mm	DESCRIPTION:
VERSION NO:	01	SHEET NO.: 1/2	TFT + CTP MODULE

01	FIRST ISSUE	CAROL	2021.01.14
VER.	REVISED DESCRIPTION	REVISER	DATE

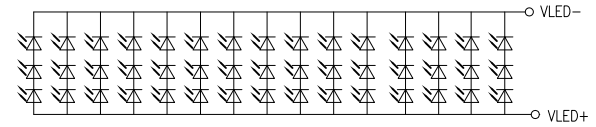


DETAIL A
SCALE 4:1

LENS BENDING
DIMENSION CONTROL
STANDARDS



TOLERANCE: $D \leq 3\% \cdot L$



BACKLIGHT CIRCUIT DIAGRAM



MULTI-INNO TECHNOLOGY CO.,LTD.

DRAWN BY:	CAROL	2021.01.14		MODULE P/N:
CHECKED BY:			SCALE : 1/1	MI1010ART-1CP
APPROVED BY:			UNIT: mm	DESCRIPTION:
VERSION NO:	01		SHEET NO.: 2/2	TFT + CTP MODULE

01	FIRST ISSUE	CAROL	2021.01.14
VER.	REVISED DESCRIPTION	REVISER	DATE